



729 Benoi Drive
Davenport, FL 33896

Ready Now

SQUARE FT.
1,580 sq. ft. **PRICE**
\$259,990

GARAGE
 1 **STORIES**
 2

BEDROOMS
 3 **BATHS**
 2.5



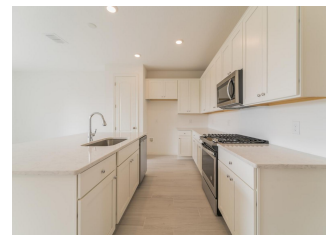
WELCOME TO The Laurel

Was \$267,821, Now 259,990

Welcome to The Enclaves at Festival! Gorgeous brand new town-homes located in the highly desirable, Champions Gate area. This beautiful home has a sunny bright, open kitchen with plenty of upgrades such as beautiful 42 inch white cabinets, all stainless steel Whirlpool appliances including gas range, dishwasher, and microwave. Enormous island with Quartz counters perfect for gatherings that is open to the great room and dining area. Main living space on first floor features wood look ceramic tile flooring and bedrooms with upgraded Shaw stain resistant carpet for comfort. Enjoy the resort style amenities with a swim in the beach walk-in community pool, kids' water park, fitness center, 18 hole miniature golf, and beach volleyball court. This home is conveniently located to shopping, grocery stores, Posner Park, Champions Gate Village and Walt Disney World. The time is now to get in on this!

About The Enclaves at Festival Cove

Ashton Woods is pleased to introduce its newest community, The Enclaves at Festival, located off Champions Gate Boulevard. The Cove Series will feature new, two-story townhomes with attached one-car garages ranging from 1,493 to 1,653 square feet. With convenient access to I-4, SR 429 and SR 417, The Enclaves is just minutes from Posner Park, Champions Gate Village and Walt Disney World. Residents will enjoy a wealth of private amenities including a resort-style pool, kids water park, fitness center, mini golf course and beach volleyball court. For updates and information on The Enclaves at Festival, join our interest list today!



SQUARE FT.
1,580 sq. ft.

GARAGE



STORIES



BEDROOMS



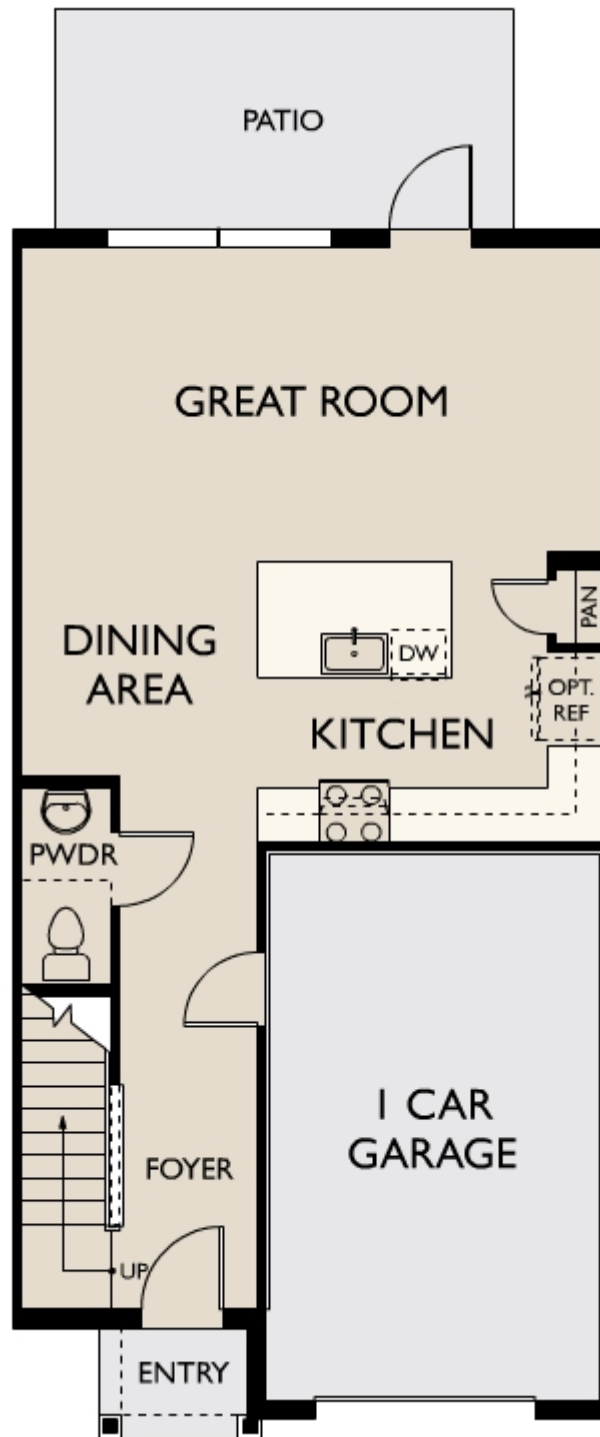
BATHS



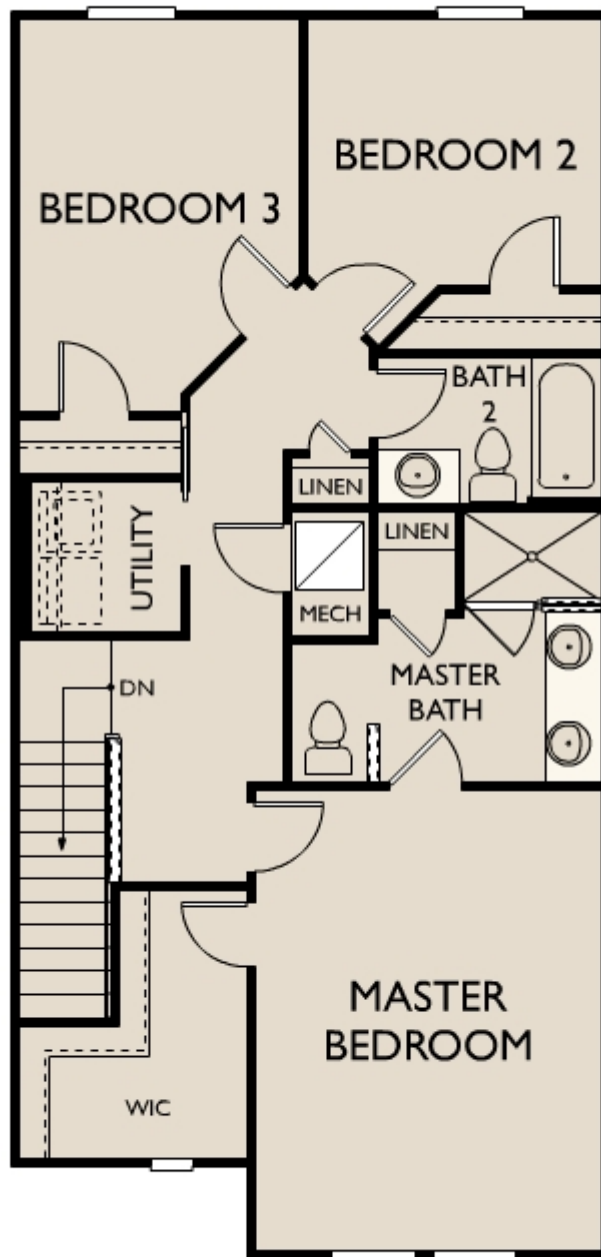
PRICE
\$259,990

READY NOW

First Floor A



Second Floor A



© 2019 Ashton Woods Homes. Ashton Woods Homes reserves the right to change plans, specifications and pricing without notice in its sole discretion. Square footage is approximate and floorplans shown are representative of actual floorplans. Window, floor and ceiling elevations are approximate, subject to change without prior notice or obligation, may not be updated on the website, and may vary by plan elevation and/or community. Special wall and window treatments, upgraded flooring, fireplace surrounds, landscape and other features in and around the model homes are designer suggestions and not included in the sales price. All renderings, color schemes, floor plans, maps and displays are artists' conceptions and are not intended to be an actual depiction of the home or its surroundings. Basement options are available subject to site conditions. Home site premiums may apply. While we endeavor to display current and accurate information, we make no representations or warranties regarding

the information set forth herein and, without limiting the foregoing, are not responsible for any information being out of date or inaccurate, or for any typographical errors. Please see Sales Representative for additional information, including current floor plans. This is not an offer to sell real estate, or solicitation to buy real estate, in any jurisdiction where prohibited by law or in any jurisdiction where prior registration is required, including New York and New Jersey.